



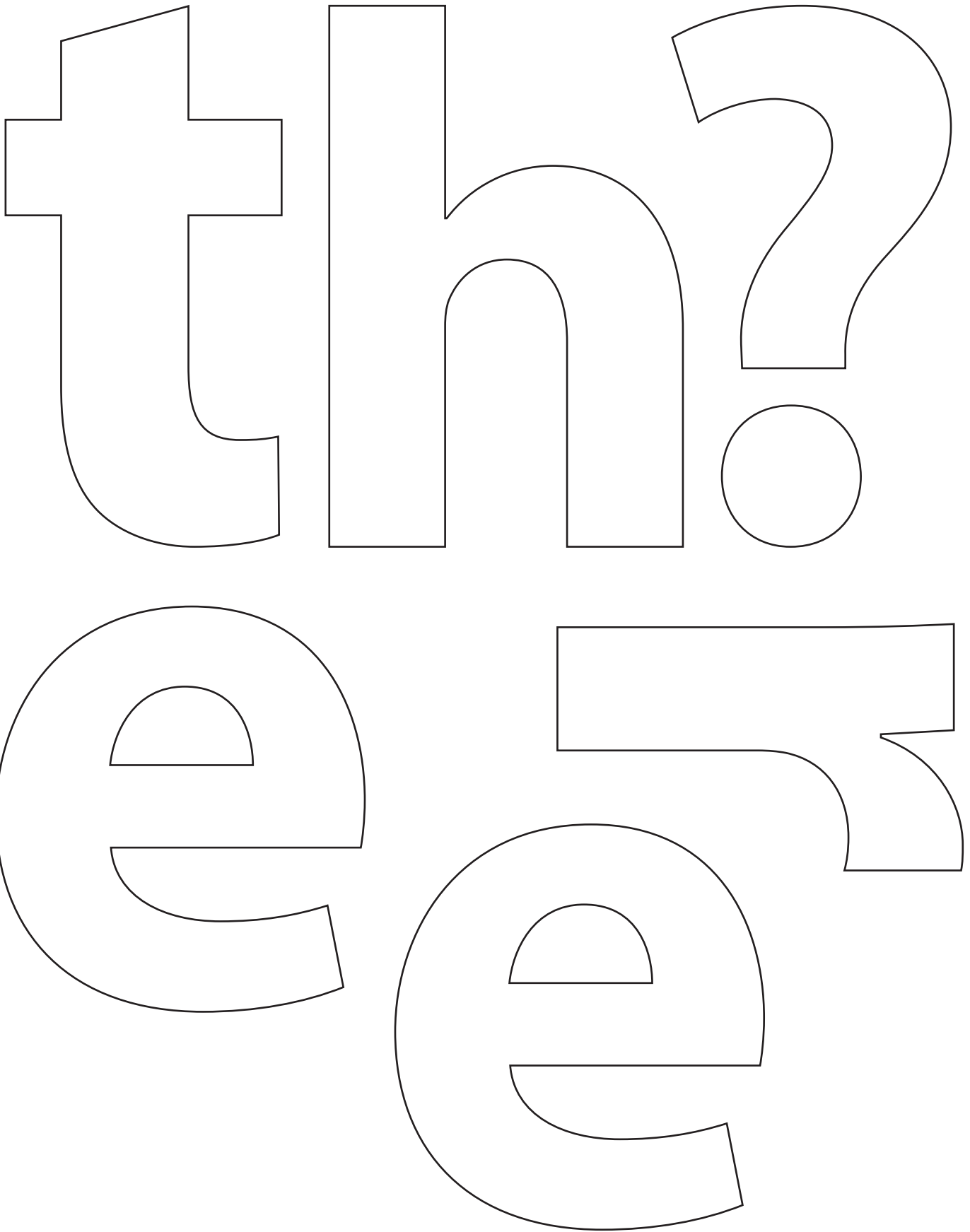


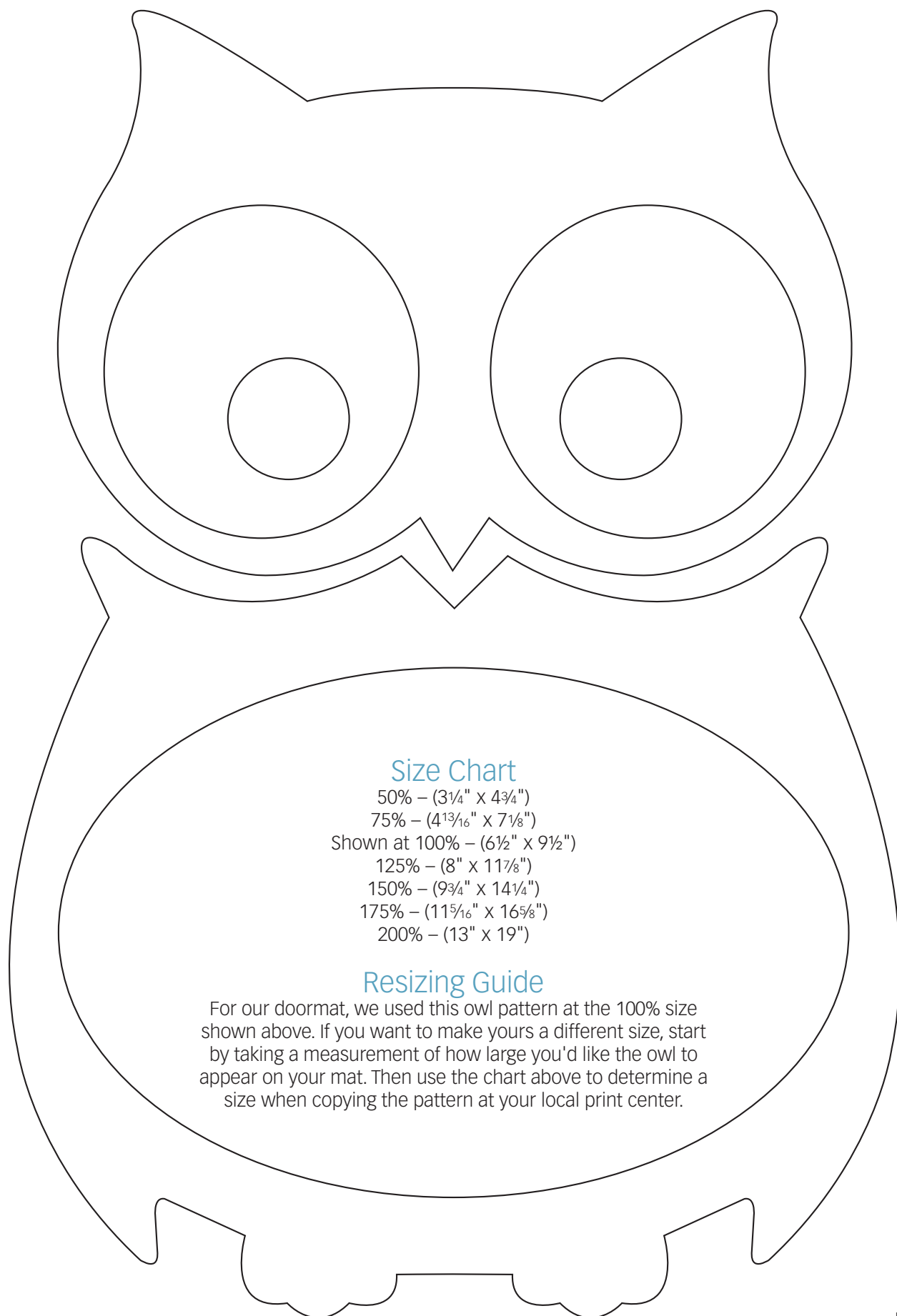
Shown at 100% – (3" & 4" letters)

## Resizing Guide

These letters will fit on a 2' x 3' doormat just as they are. For smaller or larger mats, just take these sheets to your local print center, and ask them to increase or decrease the size according to your needs. For example, a 3' x 5' doormat would need letters sized at about 133%.







## Size Chart

50% – (3¼" x 4¾")

75% – (4<sup>13</sup>/<sub>16</sub>" x 7<sup>1</sup>/<sub>8</sub>")

Shown at 100% – (6½" x 9½")

125% – (8" x 11<sup>7</sup>/<sub>8</sub>")

150% – (9¾" x 14¼")

175% – (11<sup>5</sup>/<sub>16</sub>" x 16<sup>5</sup>/<sub>8</sub>")

200% – (13" x 19")

## Resizing Guide

For our doormat, we used this owl pattern at the 100% size shown above. If you want to make yours a different size, start by taking a measurement of how large you'd like the owl to appear on your mat. Then use the chart above to determine a size when copying the pattern at your local print center.